

*Tivoli Endpoint Manager for  
Patch Management - SUSE  
Linux Enterprise*

*User's Guide*





**Note:** Before using this information and the product it supports, read the information in Notices.

© Copyright IBM Corporation 2003, 2011.

US Government Users Restricted Rights – Use, duplication or disclosure restricted by GSA ADP  
Schedule Contract with IBM Corp.



# Contents

<b>Part One</b>	<b>1</b>
<b>Patch Management for SUSE Linux Enterprise</b>	<b>1</b>
Supported platforms	1
Register a Download Plug-in	1
Patch using Fixlets	4
Manage Preference Lists	7
Using the Preference Lists Dashboard	7
<b>Part Two</b>	<b>13</b>
<b>Support</b>	<b>13</b>
Frequently asked questions	13
Technical support	14
<b>Part Three</b>	<b>15</b>
<b>Notices</b>	<b>15</b>





## Part One

# Patch Management for SUSE Linux Enterprise

---

## Supported platforms

Tivoli® Endpoint Manager for Patch Management SUSE Linux Enterprise provides coverage for Novell updates on the following platforms:

- SUSE Linux Enterprise Desktop/Server 10 SP3 (x86/x86\_64)
- SUSE Linux Enterprise Desktop/Server 11 (x86/x86\_64)
- SUSE Linux Enterprise Desktop/Server 11 SP1 (x86/x86\_64)

Patch Management SUSE Linux provides the following updates:

- Mandatory, Recommended, Optional

To install SUSE patches, subscribe to the Patches for SLE10, Patches for SLE11, and *Linux RPM Patching websites*.

A download plug-in for SUSE must be registered prior to deploying patches from the Tivoli Endpoint Manager console. This process is detailed in the sections below.

## Register a Download Plug-in

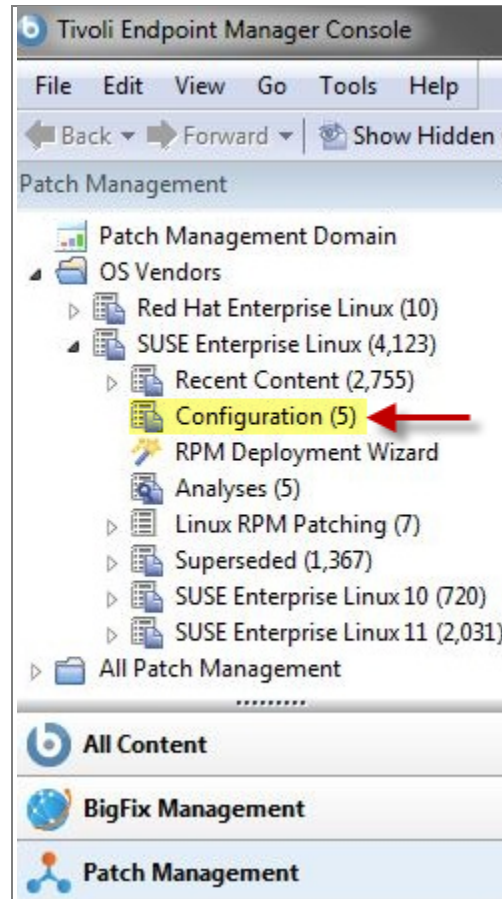
Patches must be cached on your Tivoli Endpoint Manager Server deployment. To ease the process of caching, Fixlets have a protocol incorporated that invokes download plug-ins.

Download plug-ins are executables that, based on the user's configuration, log on to the patch vendor's website and download the specified patch. Use of the download plug-in requires a valid Novell customer support agreement for SUSE Linux Enterprise systems. For the Fixlet to recognize the protocol, the download plug-in for the protocol must be registered. After registering the SUSE download plug-in, run the Fixlets to download, cache, and deploy the patches.

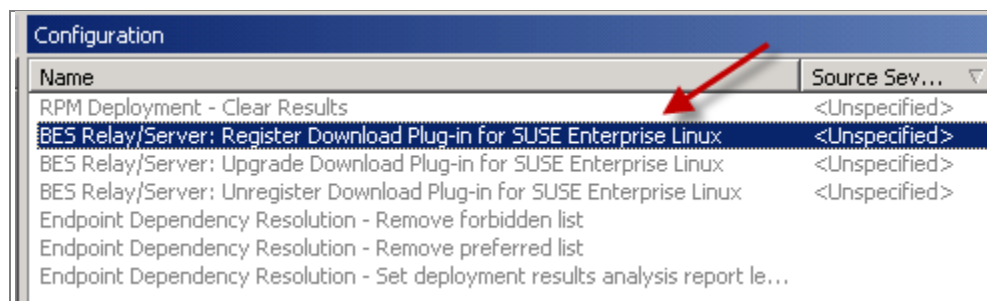
To register a download plug-in for SUSE Linux, run the *Register Download Plug-in for SUSE Linux Enterprise* task.

## Run the Register Download Plug-in Task

In the navigation tree of the Patch Management domain, expand the *OS Vendors* node. Then expand the *SUSE Linux Enterprise* node, and select the *Configuration* subnode.



In the List Panel, select the task *BES Server: Register Download Plug-in for SUSE Enterprise Linux*.



In the work area, select the link to install the *SUSE Enterprise Download Plug-in* in the Actions box. You are prompted for the following action parameters:



## Required Parameters

### SUSE Enterprise Username

Your Novell SUSE account username

(used to log in to <https://www.novell.com/ICSLogin/?%22http://www.novell.com/home/%22>)

### SUSE Enterprise Password

Your Novell SUSE account password

(used to log in to <https://www.novell.com/ICSLogin/?%22http://www.novell.com/home/%22>)

## Optional Parameters

### PROXY Proxy URL Proxy Username Proxy Password

Enter proxy parameters if the downloads must go through a proxy server. If your network requires a proxy server for Internet access, you must specify the required parameters.

Proxy URL is the URL of your proxy server. This is usually the IP address or DNS name of your proxy server, and its port, separated by a colon (for example: <http://192.168.100.10:8080>).

If your proxy server requires authentication, you must specify your **Proxy Username** and **Proxy Password**. Your Proxy Username is usually in the domain\username form.

### MIRROR Mirror URL Mirror Username Mirror Password

Enter mirror parameters if you want the plug-in to download from a mirror server.

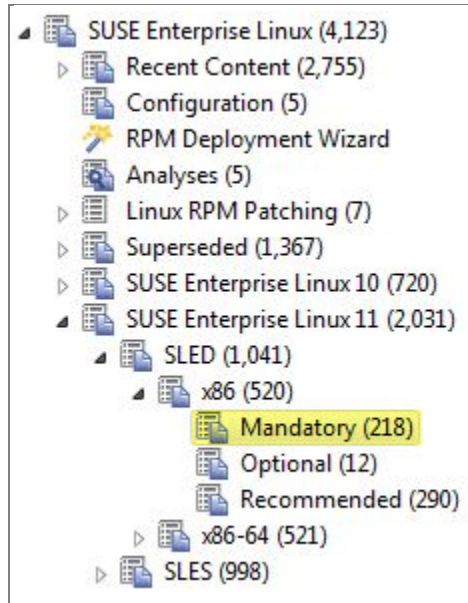
The **Mirror URL** is the URL of the mirror server. Leave blank to use Novell's mirror servers.

If the mirror server requires authentication, you must specify the **Mirror Username** and **Mirror Password**.

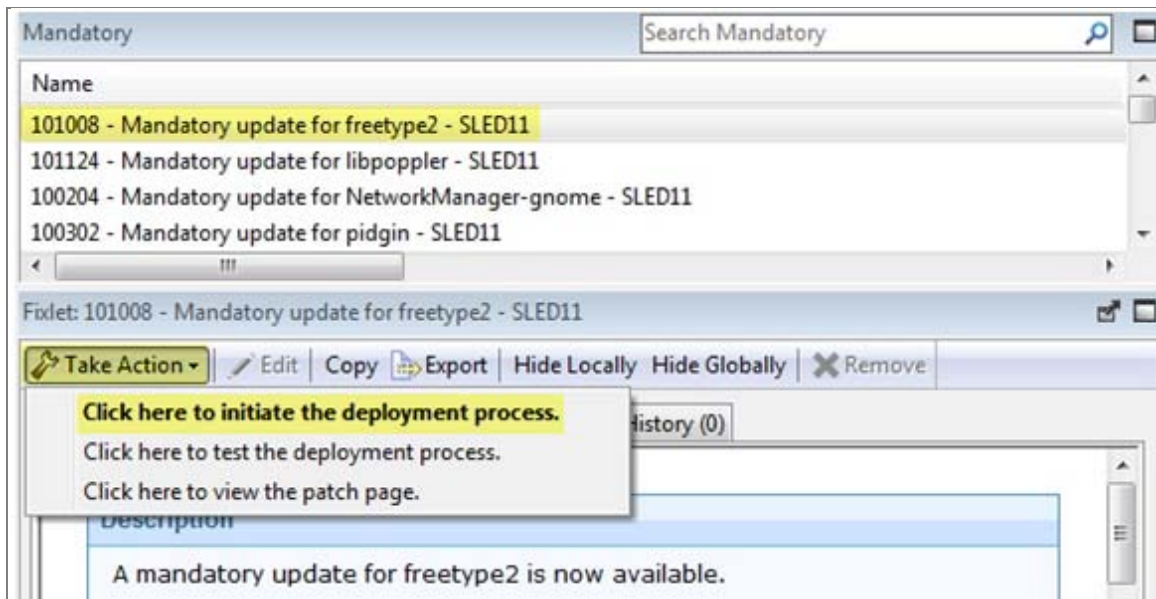
After you have entered all parameters, select the server that you want to register the plug-in with and click **OK**. Finally, authenticate your action. The plug-in is now registered.

## Patch using Fixlets

To deploy patches, navigate to the patch content using the domain nodes.

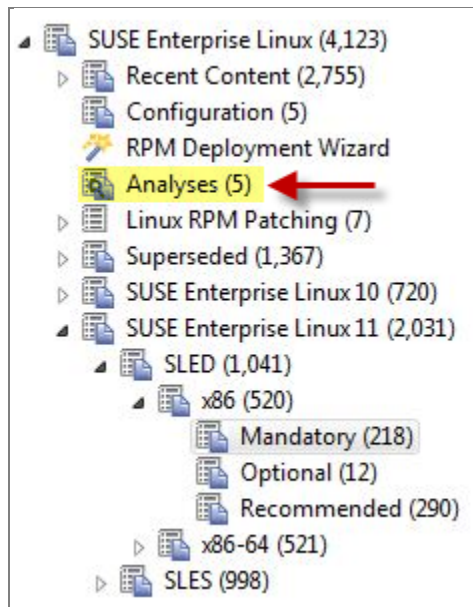


After you select an appropriate node, you can see Fixlets in the Work Area. Select the Fixlet that you want to apply, click "Take action", and start the deployment process.

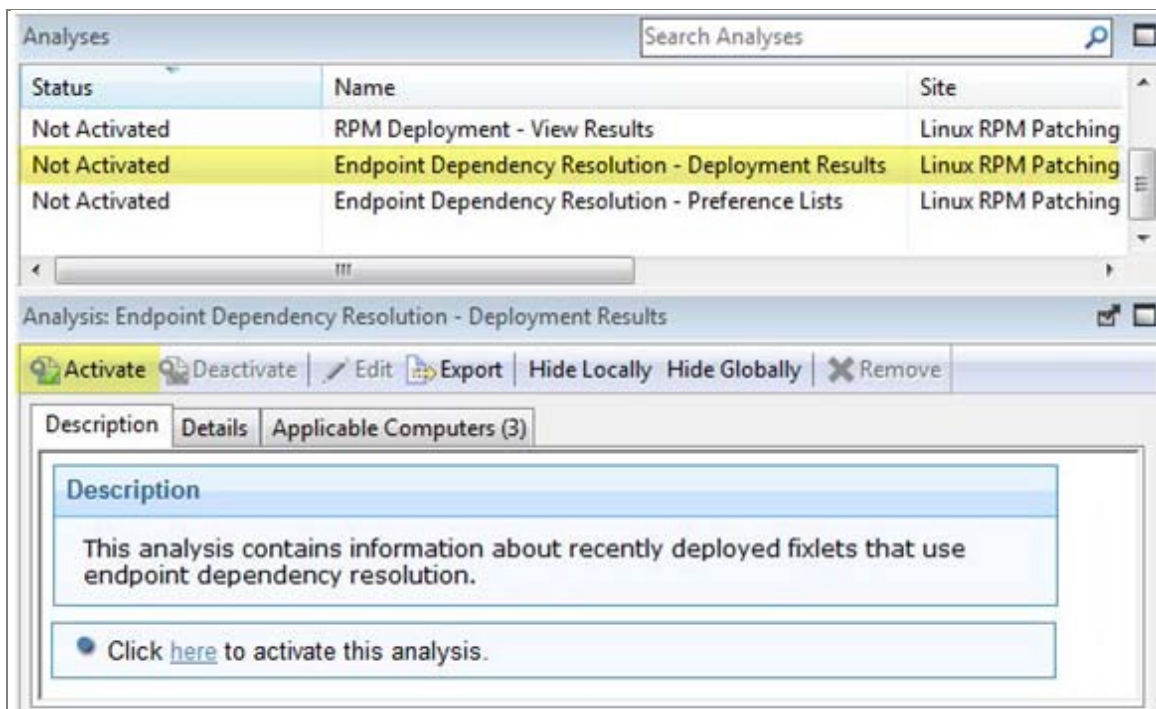


If the action is successful, the results are written in a log file on the endpoint. You can activate an analysis to view the results. You can navigate to the analysis by clicking the Analyses node and selecting "Endpoint Dependency Resolution - Deployment Results".

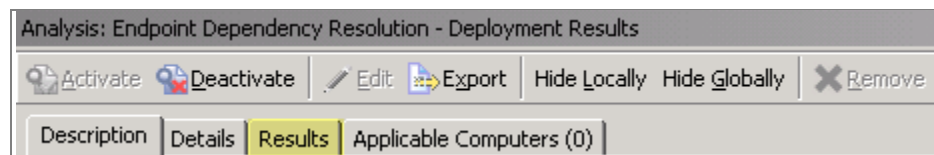




From there, click *Activate*.



Click the Results tab in the Analysis window that is displayed after you activate the analysis.





When you review the properties of an endpoint, you can view the current deployment information on that system. To view this data, navigate on the *All Content* domain and select the *Computers* node. Select the computer you want to inspect in the work area. Scroll down to the Deployment Results.

You can limit the length of the output by running the *Endpoint Dependency Resolution – Set deployment results analysis report length* task. To access this task, click OS Vendors from the navigation tree, and then click the SUSE Linux Enterprise and Configuration subnodes.

Computer: rheng-sles11-sp1-x32

Edit Settings Remove From Database Send Refresh

Summary Relevant Fixlet Messages (148) Applicable Tasks (20) Relevant Baselines (0) Baseline Component Applicability Action History (25) Manager

Endpoint Dependency Resolution - Deployment Results	
Deployment Results	[Tue May 31 10:04:58 PDT 2011] 100720054 Install Success: rpm -U
	[Tue May 31 10:04:58 PDT 2011] 100720054 ____ iputils-ss021109-292.26.1.i586.rpm
	[Tue May 31 10:29:32 PDT 2011] 110519009 Install Success: rpm -U
	[Tue May 31 10:29:32 PDT 2011] 110519009 ____ release-notes-sles-11.1.1.4-0.5.1.i586.rpm
	[Wed Jun 1 04:37:18 PDT 2011] 110518013 Install Success: rpm -U
	[Wed Jun 1 04:37:18 PDT 2011] 110518013 ____ parted-1.8.8-102.23.1.i586.rpm

The default analysis report length is 100 entries.

When running a SUSE Linux Enterprise patch Fixlet, you can also deploy a test run prior to applying the patch. You can view the Deployment Results analysis to determine if the dependencies have been successfully resolved and if an installation will be successful.

**Note:** This action reports back as Fixed, even if the test fails.

Mandatory Search Mandatory

Name

- 101008 - Mandatory update for freetype2 - SLED11
- 101124 - Mandatory update for libpoppler - SLED11
- 100204 - Mandatory update for NetworkManager-gnome - SLED11
- 100302 - Mandatory update for pidgin - SLED11

Fixlet: 101008 - Mandatory update for freetype2 - SLED11

Take Action Edit Copy Export Hide Locally Hide Globally Remove

Click here to initiate the deployment process.  
Click here to test the deployment process.  
Click here to view the patch page.

Description

A mandatory update for freetype2 is now available.

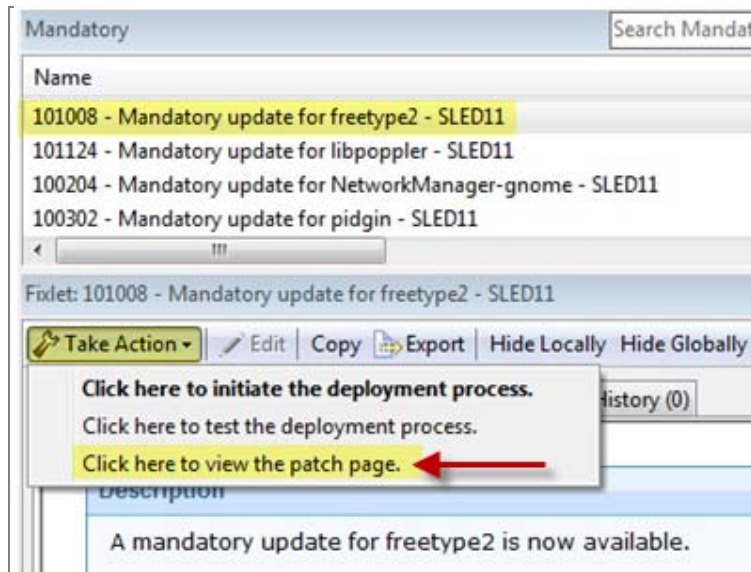
Target RPMs

- freetype2-2.3.7-25.17.1.i586.rpm - 354.2 KB
- freetype2-devel-2.3.7-25.17.1.i586.rpm - 1.1 MB



Kernel updates provide the option to upgrade or install all kernel packages. The upgrade option replaces existing kernel packages with later versions. The install option installs the later kernel packages next to the previous versions. The default behavior for kernel updates is to install packages side by side. Additionally, each kernel update Fixlet provides the ability to test each of these options.

To view the Novell bulletin for a particular Fixlet, select the *Click here to view the patch page* action to view the patch page.



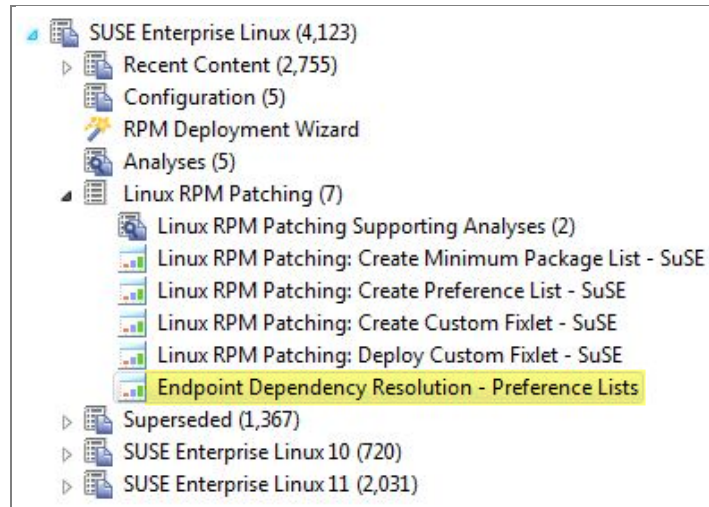
## Manage Preference Lists

Preference lists are lists of packages that affect the dependencies that are installed for systems patched by content with endpoint dependency resolution.

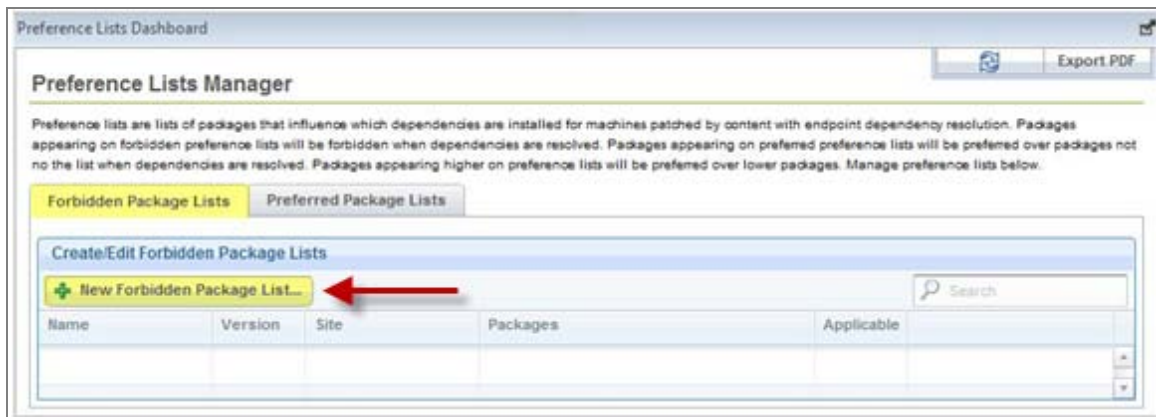
- Packages included in *forbidden* preference lists are forbidden when dependencies are resolved.
- Packages included in *preferred* preference lists are preferred over packages not in the list when dependencies are resolved.
- Packages included higher in the preference lists are preferred over lower packages. You can manage these preference lists by using the Preference Lists Dashboard.

### Using the Preference Lists Dashboard

You can navigate to the dashboard by expanding the Linux RPM Patching node and selecting the *Endpoint Dependency Resolution - Preference Lists* dashboard.



To create new Forbidden package lists, click *New Forbidden Package List*.



In the next dialog, you select a site for the preference lists. Endpoints subscribed to this site are relevant to this preference list. Click next after you choose a site.



After entering a name for the list, you can begin populating your preference list with packages. Type the name in the *Package to Add* field and click *Add*. As you type, autocomplete suggestions are shown. These suggestions are populated using target packages from the selected site. After completing your list, click *Save*, click *OK*, and enter your Private Key Password. A task that deploys this preference list is displayed in the navigation tree.



**Create new Forbidden Package List**

Site: Patches for SLE11

Name: **Test**

Package to Add: **a**

**Add**

Name
aaa_base-11-6.30.1.i586
aaa_base-11-6.30.1.x86_64
aaa_base-11-6.34.1.i586
aaa_base-11-6.34.1.x86_64
aaa_base-11-6.8.1.i586
aaa_base-11-6.8.1.x86_64
ad-2.2.47-30.5.1.i586

**Back** **Save List** **Cancel**

To edit a preference list, click *edit* for that particular list.

**Preference Lists Manager**

Preference lists are lists of packages that influence which dependencies are installed for machines patched by content with endpoint dependency resolution. Packages appearing on forbidden preference lists will be forbidden when dependencies are resolved. Packages appearing on preferred preference lists will be preferred over packages not on the list when dependencies are resolved. Packages appearing higher on preference lists will be preferred over lower packages. Manage preference lists below.

**Forbidden Package Lists** **Preferred Package Lists**

**Create/Edit Forbidden Package Lists**

**New Forbidden Package List...**

Search

Name	Version	Site	Packages	Applicable
Test	1	Patches for SLE11 Test	aaa_base-11-6.30.1.i586 banshee-1-1.4.1-12.9.2.i5	0

**Edit** **Copy** **Delete**

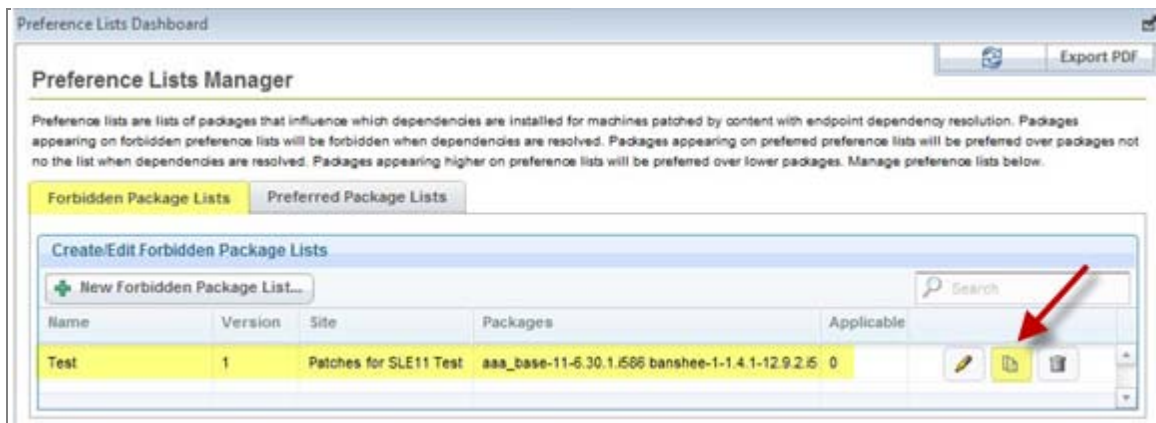
This opens the same dialog as before and allows you to edit the name and packages in the list. Click **Save**. To edit the task, click **Edit**. To redeploy the latest version of this list to all systems that already have the list, click **Edit and Redeploy**. Then click **OK** and enter your Private Key Password.

**Edit preference list?**

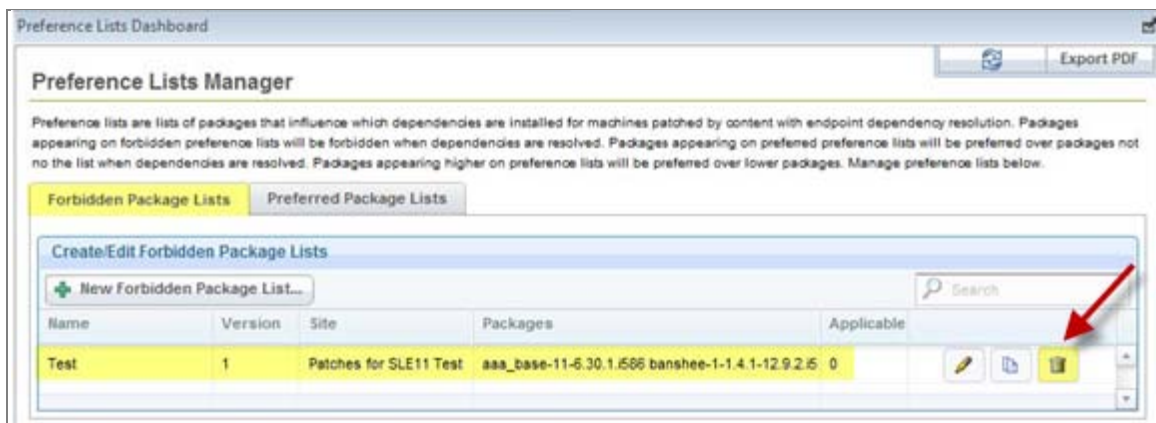
To edit the task, click "Edit." If you would like to also redeploy this list to all endpoints that have an older version, click "Edit and Redeploy."

**Edit** **Edit and Redeploy** **Cancel**

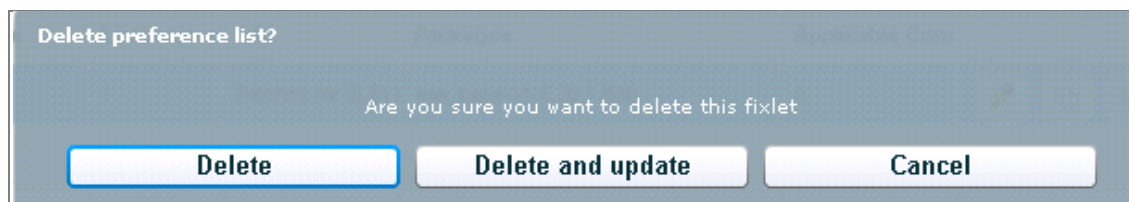
To create a copy of a preference list, click **copy** for that particular list.



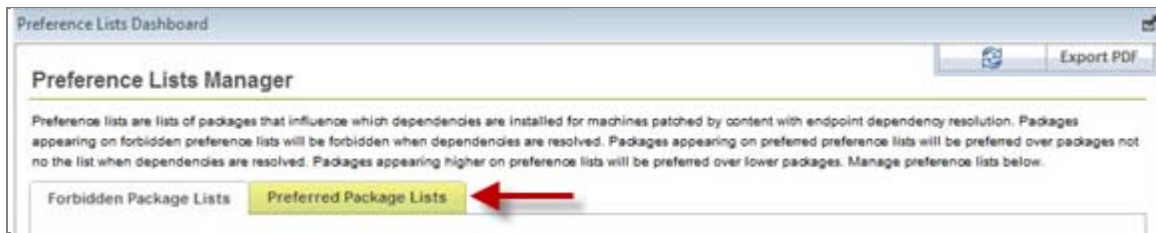
A dialog is created with a nearly identical set of data populated throughout the fields. The *Name* field has the word *copy* at the end. Click *Save* to create the new task. To delete a preference list, click *delete* for that particular list.



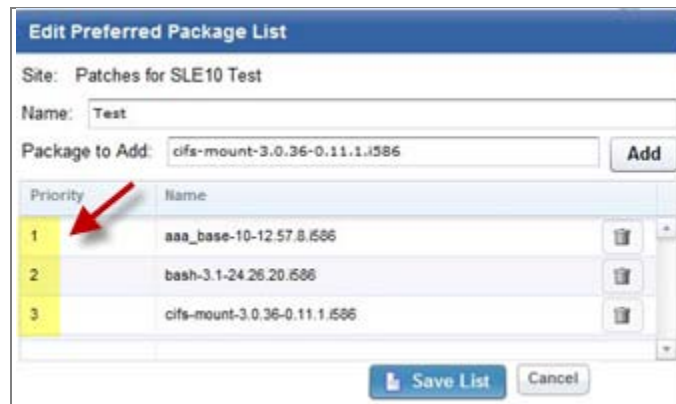
To delete the task, click *Delete*. To delete the task and issue an action to remove the preference list from all endpoints that have the list, click *Delete and Update*.



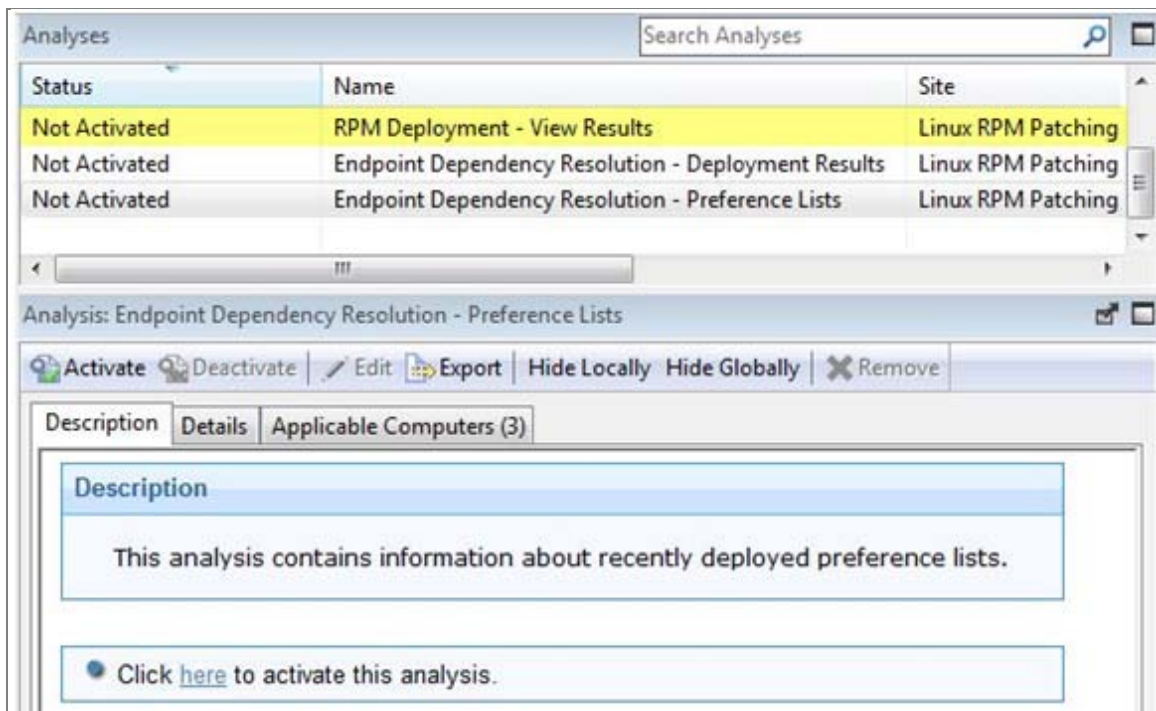
Preferred package lists can be created and managed in the same way as forbidden packages lists. The controls are listed under the Preferred Package Lists tab of the Preference Lists Dashboard.



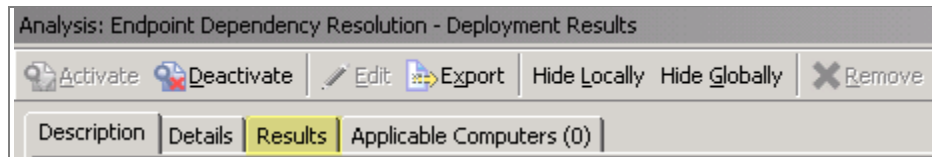
Packages are ordered from top to bottom in preference lists. Drag and drop packages to specify priority.



You can view deployed preference lists and their associated metadata by activating an analysis. Navigate to the analysis by clicking the Analyses node and selecting *Endpoint Dependency Resolution - Preference Lists*. Click the analysis and select *Activate* from the right-click menu.

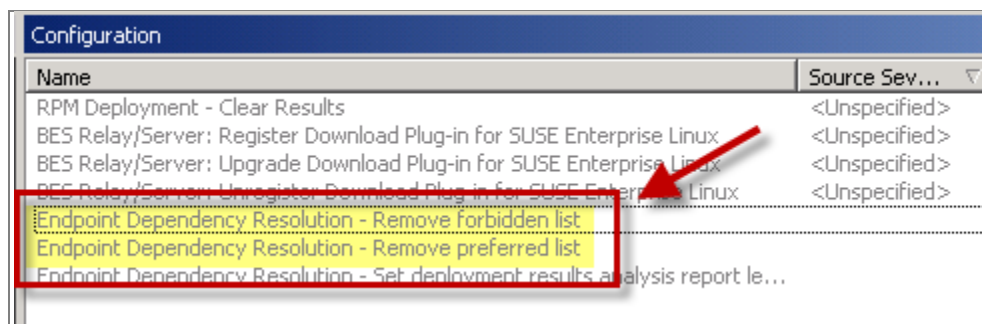


Click the Results tab in the Analysis window that is displayed after you activate the analysis.



When you review an endpoint's properties, you can view the current preference list information on that system.

To remove a preference list from an endpoint, run either the *Remove Endpoint Dependency Resolution – Remove preferred list* or the *Remove Endpoint Dependency Resolution – Remove forbidden list* tasks.







Part Two

## Support

---

### Frequently asked questions

#### What are superseded patches?

Superseded Fixlets are Fixlets that contain outdated packages. If a Fixlet is superseded, then there exists a newer Fixlet with newer versions of the packages. The newer Fixlet ID can be found in the description of the superseded Fixlet.

#### How do I deal with missing patches?

IBM only provides patches for bulletins listed on Novell's website for supported configurations. These bulletins can be found in Novell's Patch Finder:

[Patch Finder](#)

#### Where are the deployment logs located on endpoints?

The logs are located in a folder called EDRDeployData in the client folder. (/var/opt/BESClient/EDRDeployData).

#### Why is my action reporting back as a failed download?

Make sure your download plug-in has been updated to the latest version and is registered with the correct credentials.

#### If I have registered the latest plug-ins, why do downloads still fail?

There is a known issue with Evan's Patch #1 (8.0.627) not recognizing the whitelist for dynamic downloads. Upgrade to the latest version of Tivoli Endpoint Manager to resolve the issue.

#### What do I do when action reports back with an "EDR Plugin failure, Invalid set of initially installed packages ?"

There is at least one conflict between the packages that exist on the system. The resolver will not work until the conflicting packages are removed.



### **Why is there XML in the deployment results?**

The XML is from the error output of the resolver when the resolver fails to produce a solution. You can look at the description in the “errorType” tag to gain a better understanding of why the failure occurred.

### **What do I do when the deployment results display a “Dependency Resolver Failure, noSolution ? ”**

If the resolver finds that there is no solution, the system cannot install all targets and dependencies because of a conflict between these files and the endpoint files.

### **How often are new dependency graphs generated?**

Dependency graphs are generated every Monday, Wednesday, and Friday.

### **What do I do when an action reports back with an installation failure?**

Check to see if the conflict is caused by a vendor-acquired package. These must be removed for the installation to occur.

### **Why does the resolver function select a lower priority package over a higher priority one?**

The resolver will not select a preferred package if selecting that package creates a conflict with another package. Therefore, it is possible for a lower priority package to be selected.

## **Technical support**

The BigFix technical support site offers a number of specialized support options to help you learn, understand, and optimize your use of this product:

- [IBM Tivoli Endpoint Manager Info Center](#)
- [BigFix Support Site](#)
- [Documentation](#)
- [Knowledge Base](#)
- [Forums and Communities](#)



*Part Three*

## *Notices*

---

IBM may not offer the products, services, or features discussed in this document in other countries. Consult your local IBM representative for information on the products and services currently available in your area. Any reference to an IBM product, program, or service is not intended to state or imply that only that IBM product, program, or service may be used. Any functionally equivalent product, program, or service that does not infringe any IBM intellectual property right may be used instead. However, it is the user's responsibility to evaluate and verify the operation of any non-IBM product, program, or service.

IBM may have patents or pending patent applications covering subject matter described in this document. The furnishing of this document does not grant you any license to these patents. You can send license inquiries, in writing, to:

IBM Director of Licensing  
IBM Corporation  
North Castle Drive  
Armonk, NY 10504-1785  
U.S.A.

For license inquiries regarding double-byte (DBCS) information, contact the IBM Intellectual Property Department in your country or send inquiries, in writing, to:

Intellectual Property Licensing  
Legal and Intellectual Property Law  
IBM Japan Ltd.  
1623-14, Shimotsuruma, Yamato-shi  
Kanagawa 242-8502 Japan

The following paragraph does not apply to the United Kingdom or any other country where such provisions are inconsistent with local law: INTERNATIONAL BUSINESS MACHINES CORPORATION PROVIDES THIS PUBLICATION "AS IS" WITHOUT WARRANTY OF ANY KIND, EITHER EXPRESS OR IMPLIED, INCLUDING, BUT NOT LIMITED TO, THE IMPLIED WARRANTIES OF NON-INFRINGEMENT, MERCHANTABILITY OR FITNESS FOR A PARTICULAR PURPOSE. Some states do not allow disclaimer of express or implied warranties in certain transactions, therefore, this statement may not apply to you.

This information could include technical inaccuracies or typographical errors. Changes are periodically made to the information herein; these changes will be incorporated in new editions of the publication. IBM may make improvements and/or changes in the product(s) and/or the program(s) described in this publication at any time without notice.

Any references in this information to non-IBM Web sites are provided for convenience only and do not in any manner serve as an endorsement of those Web sites. The materials at those Web sites are not part of the materials for this IBM product and use of those Web sites is at your own risk.

IBM may use or distribute any of the information you supply in any way it believes appropriate without incurring any obligation to you



Licensees of this program who wish to have information about it for the purpose of enabling: (i) the exchange of information between independently created programs and other programs (including this one) and (ii) the mutual use of the information which has been exchanged, should contact:

IBM Corporation  
2Z4A/101  
11400 Burnet Road  
Austin, TX 78758 U.S.A.

Such information may be available, subject to appropriate terms and conditions, including in some cases payment of a fee.

The licensed program described in this document and all licensed material available for it are provided by IBM under terms of the IBM Customer Agreement, IBM International Program License Agreement or any equivalent agreement between us.

Information concerning non-IBM products was obtained from the suppliers of those products, their published announcements or other publicly available sources. IBM has not tested those products and cannot confirm the accuracy of performance, compatibility or any other claims related to non-IBM products. Questions on the capabilities of non-IBM products should be addressed to the suppliers of those products.

#### COPYRIGHT LICENSE:

This information contains sample application programs in source language, which illustrate programming techniques on various operating platforms. You may copy, modify, and distribute these sample programs in any form without payment to IBM, for the purposes of developing, using, marketing or distributing application programs conforming to the application programming interface for the operating platform for which the sample programs are written. These examples have not been thoroughly tested under all conditions. IBM, therefore, cannot guarantee or imply reliability, serviceability, or function of these programs. The sample programs are provided "AS IS", without warranty of any kind. IBM shall not be liable for any damages arising out of your use of the sample programs.

#### TRADEMARKS:

IBM, the IBM logo, and ibm.com are trademarks or registered trademarks of International Business Machines Corporation in the United States, other countries, or both.

If these and other IBM trademarked terms are marked on their first occurrence in this information with a trademark symbol (® or ™), these symbols indicate U.S. registered or common law trademarks owned by IBM at the time this information was published. Such trademarks may also be registered or common law trademarks in other countries. A current list of IBM trademarks is available on the Web at "Copyright and trademark information" at <http://www.ibm.com/legal/copytrade.shtml>.

Adobe, the Adobe logo, PostScript, and the PostScript logo are either registered trademarks or trademarks of Adobe Systems Incorporated in the United States, and/or other countries.

Java and all Java-based trademarks and logos are trademarks or registered trademarks of Oracle and/or its affiliates.



Microsoft, Windows, Windows NT, and the Windows logo are trademarks of Microsoft Corporation in the United States, other countries, or both.

Linux is a registered trademark of Linus Torvalds in the United States, other countries, or both.

UNIX is a registered trademark of The Open Group in the United States and other countries.

Other company, product, and service names may be trademarks or service marks of others.