

Patch Management for Solaris

Supported Versions

BigFix provides coverage for Sun updates on the following platforms:

- Solaris 7 (SPARC)
- Solaris 8 (SPARC)
- Solaris 9 (SPARC)
- Solaris 10 (SPARC, x86)

BigFix covers the following Sun updates on these platforms:

- Sun Security Patches
- Sun Recommended Patches
- Sun Maintenance Patches
- Sun Device Drivers
- Sun Recommended Patch Clusters

Patching using Fixlet Messages

To deploy patches from the BigFix Console:

1. On the **Fixlet messages** tab, sort by **Site**. Choose the Site **Patches for Solaris**.
2. Double-click on the Fixlet message you want to deploy. (In this example, the Fixlet message is **127112-02: SunOS 5.10_x86: kernel patch**.)

The **Fixlet** window opens.

The screenshot displays the BigFix console interface for a specific Fixlet message. The title bar reads "Fixlet: 127112-02: SunOS 5.10_x86: kernel patch" and "Patches for Solaris". Below the title bar are tabs for "Description", "Details", "Applicable Computers", and "Action History". The main content area is titled "127112-02: SunOS 5.10_x86: kernel patch" and "Patches for Solaris".

Description

Sun has released a SunOS 5.10_x86: kernel patch, which fixes several security vulnerabilities. After downloading and installing this patch, affected computers will no longer be susceptible to these vulnerabilities.

Note: Affected computers will report back as 'Pending Restart' once the patch has run successfully, but will not report back their final status until the affected computer is restarted.

Note: Sun recommends that this patch be installed in single-user mode. The Task 'Single-User Mode' (Task ID#28 in the Patches for Solaris site) can be used to facilitate this process.

Important Note: To obtain this patch, you must have a Sun Service Plan in effect. The file "127112-02.jar" must be downloaded from the Sun support website, renamed to its corresponding checksum value, "46af7c7b0c96f47d0373357f18302a939d2a1f89", and placed in the BES Server download cache for this action to complete successfully.

File Size: 8 MB

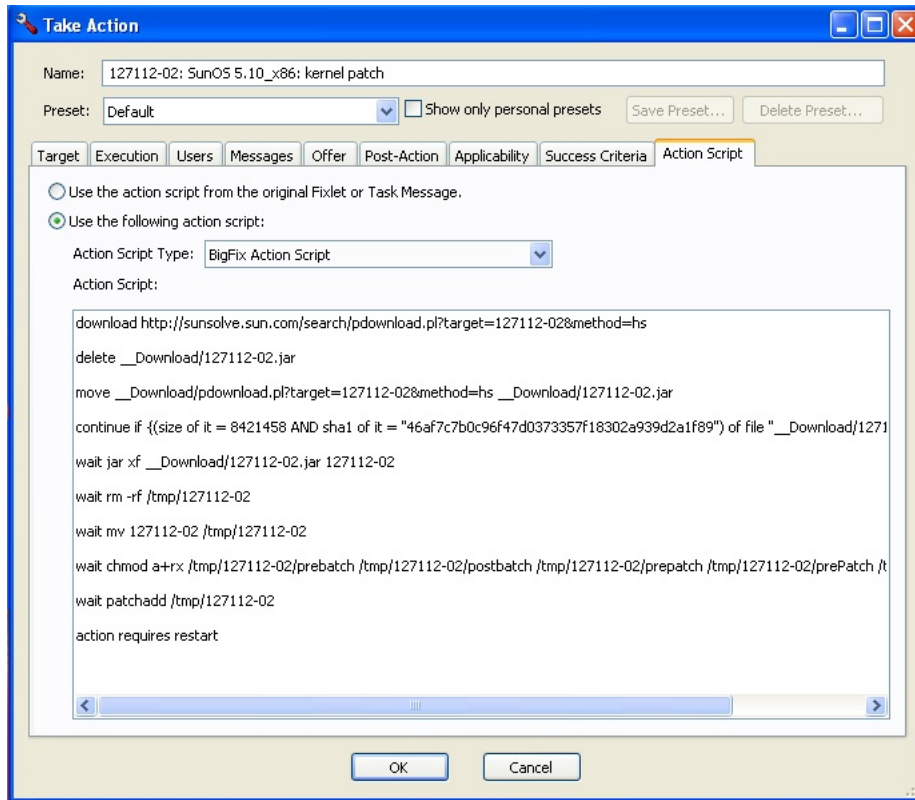
Actions

- [Click here](#) to initiate the deployment process.
- [Click here](#) to view more information from Sun about this patch.
- [Click here](#) to view the Sun Patch Access Options page.

Reference #127112
Portions Copyrighted © 2001-2007 BigFix, Inc. All Rights Reserved

For more information about setting options using the tabs in the Fixlet window, consult the *Console Operators Guide*.

3. Select the appropriate Action link.



A **Take Action** window opens.

For more information about setting options using the tabs in the Take Action dialog box, consult the *Console Operators Guide*.

4. Click **OK**, and enter your **Private Key Password** when asked.

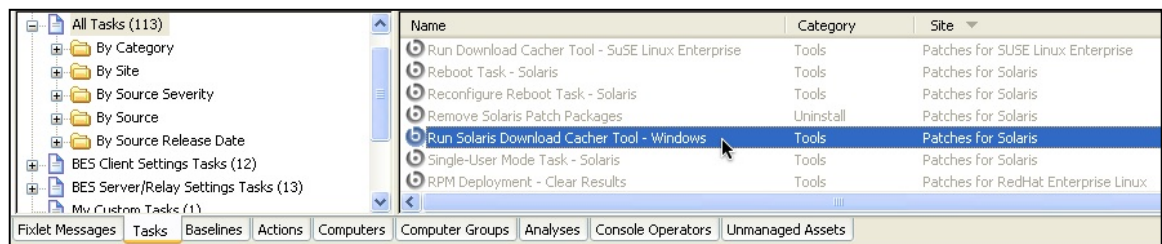
Using the Download Cacher

The Download Cacher is designed to automatically download and cache Solaris packages to facilitate deployment of Solaris Fixlet messages.

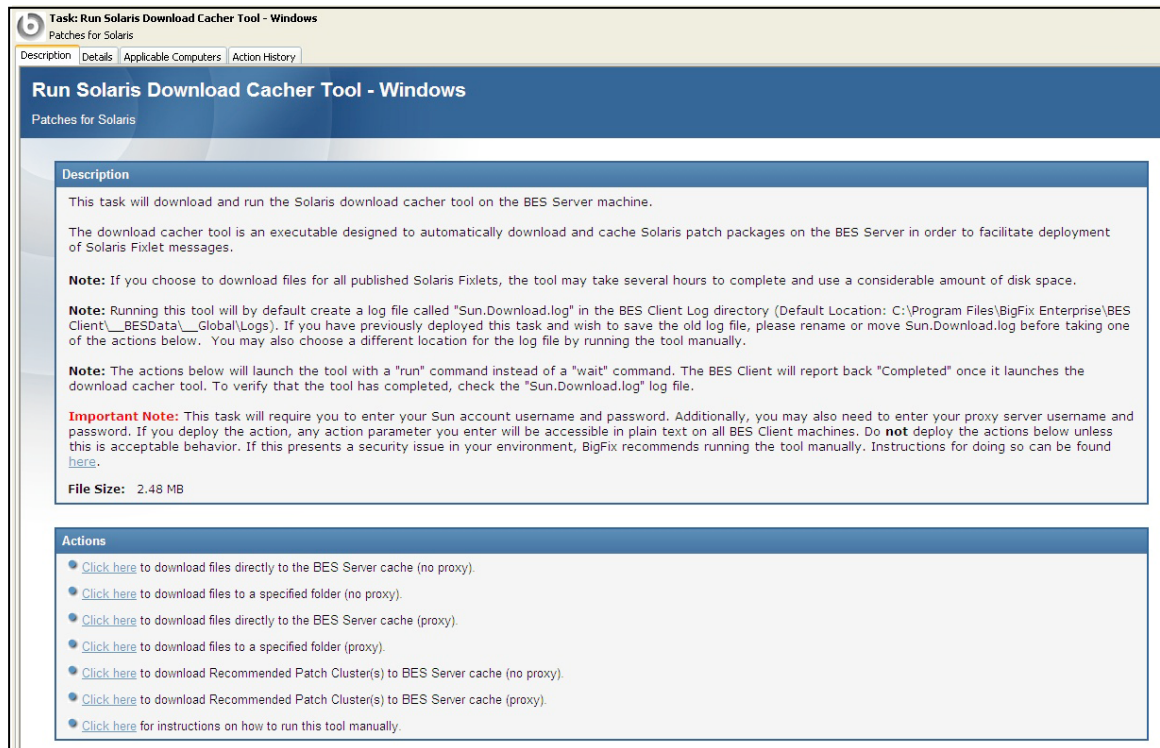
Running the Download Cacher Task

BigFix provides a Task for running the Download Cacher Tool for Solaris.

1. From the Tasks tab, choose **Run Solaris Download Cacher Tool – Windows**.



The Task window opens.



2. Select the appropriate **Action** link.

Running the Download Cacher Manually

Solaris patching requires manually caching downloads from Sun before deployment. The BigFix Download Cacher for Solaris is a command line tool designed to automatically download and cache Solaris patch .jar packages to facilitate deployment of Solaris Fixlet messages.

The tool can be downloaded from the Support website: <http://support.bigfix.com/cgi-bin/kbdirect.pl?id=371>.

To run this tool, create a batch file with the following parameters:

Required Parameters

SunUsername

Your Sun account username

(used to log into http://sunsolve.sun.com/private-cgi/show.pl?target=home_con)

SunPassword

Your Sun account password

(used to log into http://sunsolve.sun.com/private-cgi/show.pl?target=home_con)

DirectoryPath/cache

The full path to the folder where downloaded files should be saved. The keyword **cache** indicates that files should be downloaded to the BigFix Server download cache and should only be used when SolarisDownloadCacher-x.x.exe is run on a BigFix Server machine.

Optional Parameters

[Logfile Directory]

Full path to the folder where you would like to create the log file. By default, the logfile is placed in the same directory in which the Download Cacher tool is located.

(for example: C:\Solaris Download Cacher \Logs)

[Increase Cache]

This option is only available if the specified download directory path is the keyword **cache**. Enter 'yes' to increase the BigFix Server cache automatically in the event that the size of the files being downloaded exceeds the current amount of free space in the cache. Enter 'no' or leave blank to be prompted to manually increase the cache.

[Patch ID(s)]

Specify Solaris Patch ID(s). Separate each patch ID with a space (ex: 118822 118833 121012). Use this option when you wish to download files for specific patches. If you do not specify this parameter, the tool will cache all files for all published Fixlet messages in the Solaris Fixlet site.

[Solaris OS Version(s)]

BigFix currently supports Solaris 7, 8, 9, 10, and 10x86. Enter a space-delimited list (e.g. "9", "8 9 10") to indicate the version(s) for which you would like to download files. If you do not specify this parameter, the tool will cache downloads for all versions.

[PROXY] [Proxy URL] [Proxy Username] [Proxy Password]

Use the **PROXY** keyword used to indicate that downloads must go through a proxy server. If your network requires a proxy server for Internet access, you must specify this keyword and provide any required parameters.

Proxy URL is the URL of your proxy server. This is usually the IP address or DNS name of your proxy server, and its port, separated by a colon (for example: http://192.168.100.10:8080).

If your proxy server requires authentication, you must specify your **Proxy Username** and **Proxy Password**. Your Proxy Username is usually in the form of domain\username.

[cluster]

Use the keyword **cluster** if you want to download Solaris Recommended Patch Clusters. By default, patch clusters will not be downloaded.

--maintenance

Use this option if you want to download patches from the "Solaris Maintenance" site rather than the "Patches for Solaris" site. The "Solaris Maintenance" site contains content for non-security patches. By default, the download cacher tool will look for patches in the "Patches for Solaris" site.

--no-rename

Use this option if you wish to download Solaris patch files, but not rename them to their respective sha1 checksum values.

Sample.bat

```
SolarisDownloadCacher-x.x.exe sun_username sun_password cache C:\logs yes
118833 10 PROXY http://www.proxyserver.com:8080 proxy_user proxy_password
```

Usage

```
SolarisDownloadCacher-x.x.exe SunUsername SunPassword DirectoryPath/cache
[Logfile Directory] [Increase Cache] [Patch ID(s)] [Solaris OS Version(s)]
[cluster] [PROXY] [Proxy URL] [Proxy Username] [Proxy Password] [--maintenance]
[--no-rename]
```

Note: If you run the tool without specifying any parameters, you will be prompted to enter the parameters at the command line.

Applying Patches in Single-User Mode

Sun recommends that some patches, including cluster and kernel patches, be applied with the computer in single user mode. By default, the BigFix Solaris Patch solution applies Solaris patches in the current run level of the computer. Typically, Solaris computers use run level 3 or multi-user mode. In some cases, you may want or need to use single user mode to successfully apply the Solaris patch.

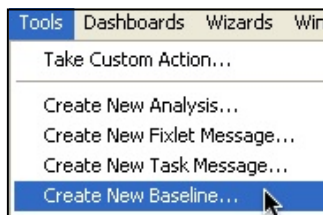
The procedure below outlines how to modify a Solaris patch Fixlet message so that it is applied in single-user mode.

Note: Your BigFix deployment must include a subscription to the “Patches for Solaris” site in order to perform the following tasks.

Creating a Baseline

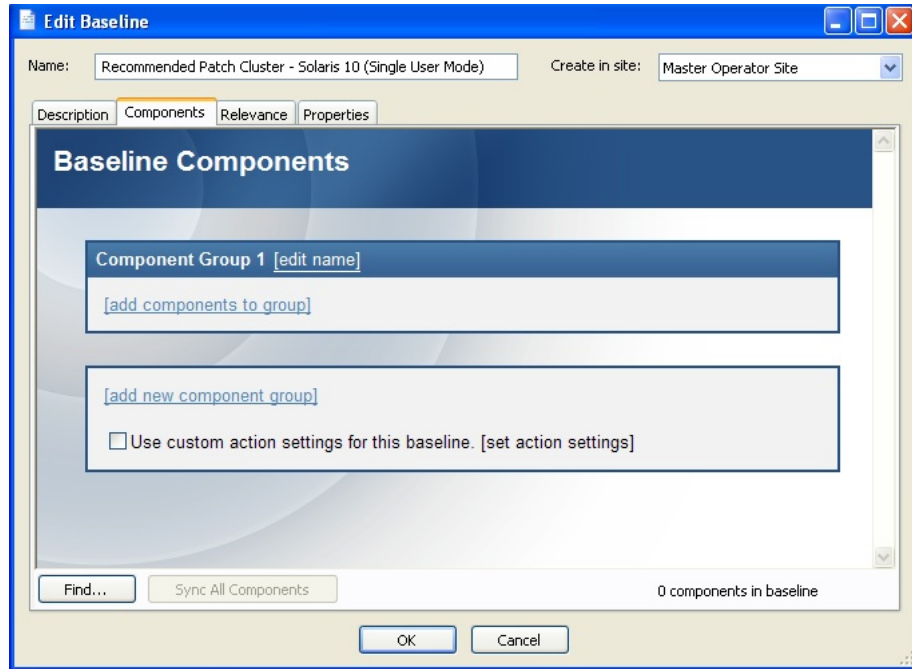
Perform the following steps for each Solaris patch Fixlet messages you would like to apply in single user mode.

1. In the BigFix Console, go to **Tools > Create New Baseline**.



The **Edit Baseline** window opens.

2. Enter a logical Name and Description such as "Recommended Patch Cluster - Solaris 10 (Single User Mode)."



3. On the Components tab, add the following items to Component Group 1 and ensure they are ordered as listed here:
 - a. The **Single-User Mode Task - Solaris** (ID #28 in the **Patches for Solaris** site).
 - b. One or more Solaris Patch Fixlets available in the **Patches for Solaris** site.
 - c. Choose either the **Reboot - Solaris** task or the **Reconfigure Reboot - Solaris** task (ID #32 and ID #30 in the **Patches for Solaris** site) depending on the requirements of the patch in step 3b.
4. Click **OK** and enter your password.

The Baseline can now be deployed to apply the Solaris patches you specified in single-user mode.

Note: Before deploying patches throughout your organization, BigFix recommends that you perform internal testing using the solution provided here.

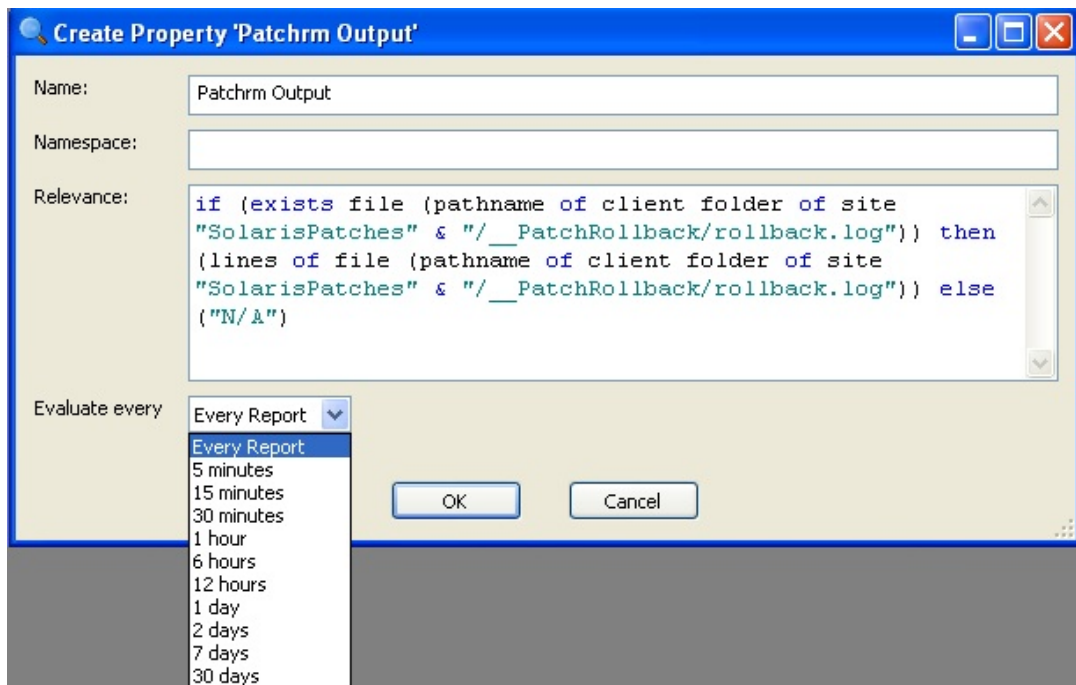
Uninstalling Patches

To uninstall Solaris patches, use the Patch Rollback wizard.

1. Go to **Wizards > Solaris Patch Rollback Wizard**.



2. Click the **here** link to activate the Patchrm Output property, which enables you to view detailed results.



3. Enter a namespace, and choose the interval for which you would like to evaluate output. Click **OK**.

You return to the Wizard, and the note now displays:

Note: The retrieved property 'Patchrm Output' is activated and can be used to view more detailed results of this action.

4. Select a Solaris patch from the drop-down menu, or type the Patch ID you wish to uninstall. Click **Finish**.