

Patch Management for RedHat Enterprise Linux

Supported Versions

BigFix provides coverage for RedHat updates on the following platforms:

- RedHat Enterprise Linux 5
- RedHat Enterprise Linux 4
- RedHat Enterprise Linux 3

BigFix covers the following RedHat updates on these platforms:

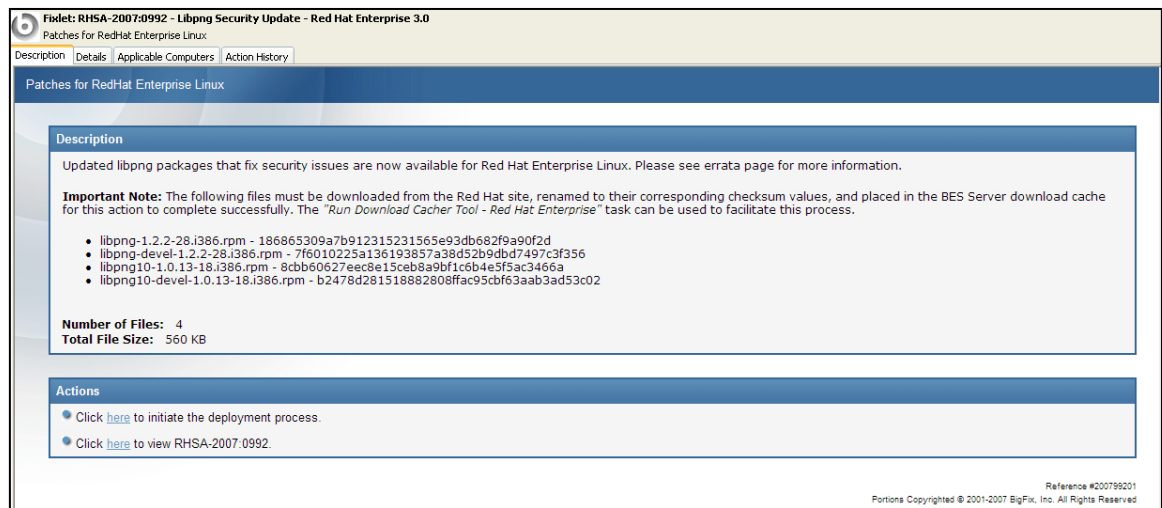
- RedHat Security Advisories
- RedHat Bug Fix Advisories
- RedHat Enhancement Advisories

Patching using Fixlet Messages

To deploy patches from the BigFix Console:

1. On the **Fixlet messages** tab, sort by **Site**. Choose the Site **Patches for RedHat Enterprise Linux**.
2. Double-click on the Fixlet message you want to deploy. (In this example, the Fixlet message is **RHSA-2007:0992 - Libpng Security Update - Red Hat Enterprise 3.0**.)

The **Fixlet** window opens.



Fixlet: RHSA-2007:0992 - Libpng Security Update - Red Hat Enterprise 3.0
Patches for RedHat Enterprise Linux

Description | Details | Applicable Computers | Action History

Patches for RedHat Enterprise Linux

Description

Updated libpng packages that fix security issues are now available for Red Hat Enterprise Linux. Please see errata page for more information.

Important Note: The following files must be downloaded from the Red Hat site, renamed to their corresponding checksum values, and placed in the BES Server download cache for this action to complete successfully. The *Run Download Cacher Tool - Red Hat Enterprise* task can be used to facilitate this process.

- libpng-1.2.2-28.i386.rpm - 186865309a7b912315231565e93db682f9a90f2d
- libpng-devel-1.2.2-28.i386.rpm - 7f6010225a136193857a38d52b9dbd7497c3f356
- libpng10-1.0.13-18.i386.rpm - 8cbb60627eecd8e15ceb8a9bf1c6b4e3f5ac3466a
- libpng10-devel-1.0.13-18.i386.rpm - b2478d281518882808ffac95cbf63aab3ad53c02

Number of Files: 4
Total File Size: 560 KB

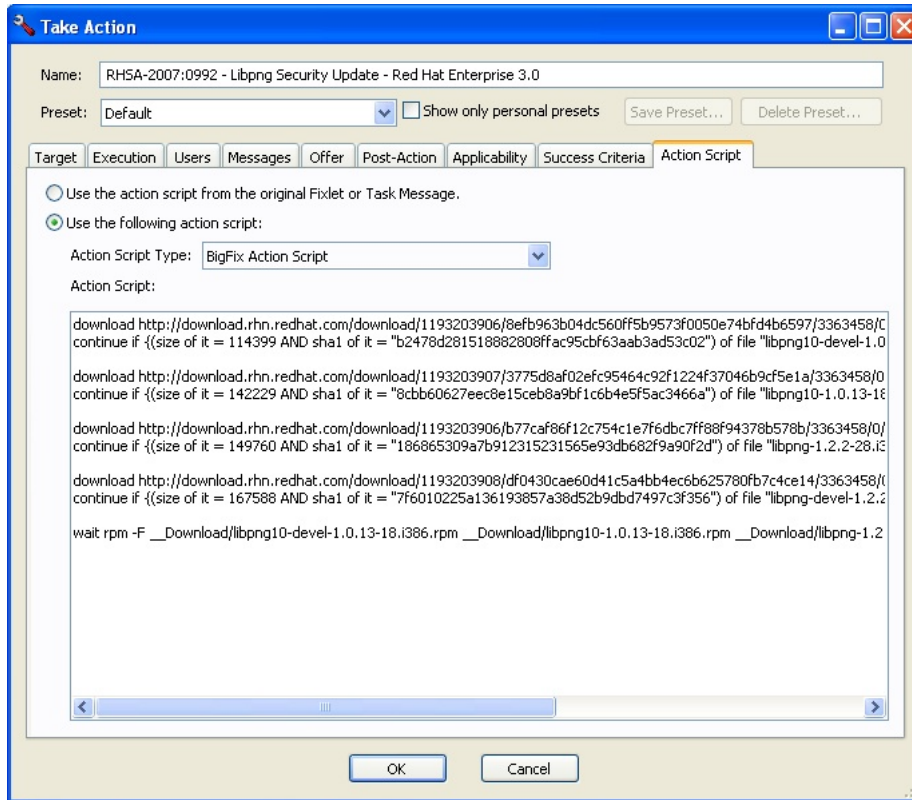
Actions

- Click [here](#) to initiate the deployment process.
- Click [here](#) to view RHSA-2007:0992.

Reference #20079201
Portions Copyrighted © 2001-2007 BigFix, Inc. All Rights Reserved

For more information about setting options using the tabs in the Fixlet window, consult the *Console Operators Guide*.

3. Select the appropriate Action link.



A **Take Action** window opens.

For more information about setting options using the tabs in the Take Action dialog box, consult the *Console Operators Guide*.

4. Click **OK**, and enter your **Private Key Password** when asked.

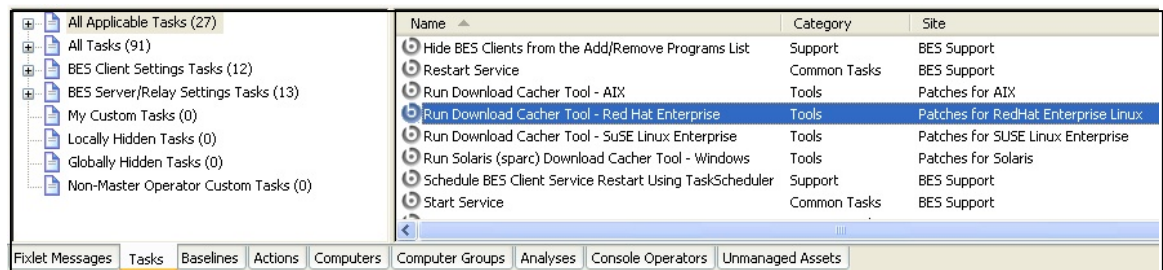
Using the Download Cacher

The Download Cacher is designed to automatically download and cache RedHat RPM packages to facilitate deployment of RedHat Enterprise Linux Fixlet messages.

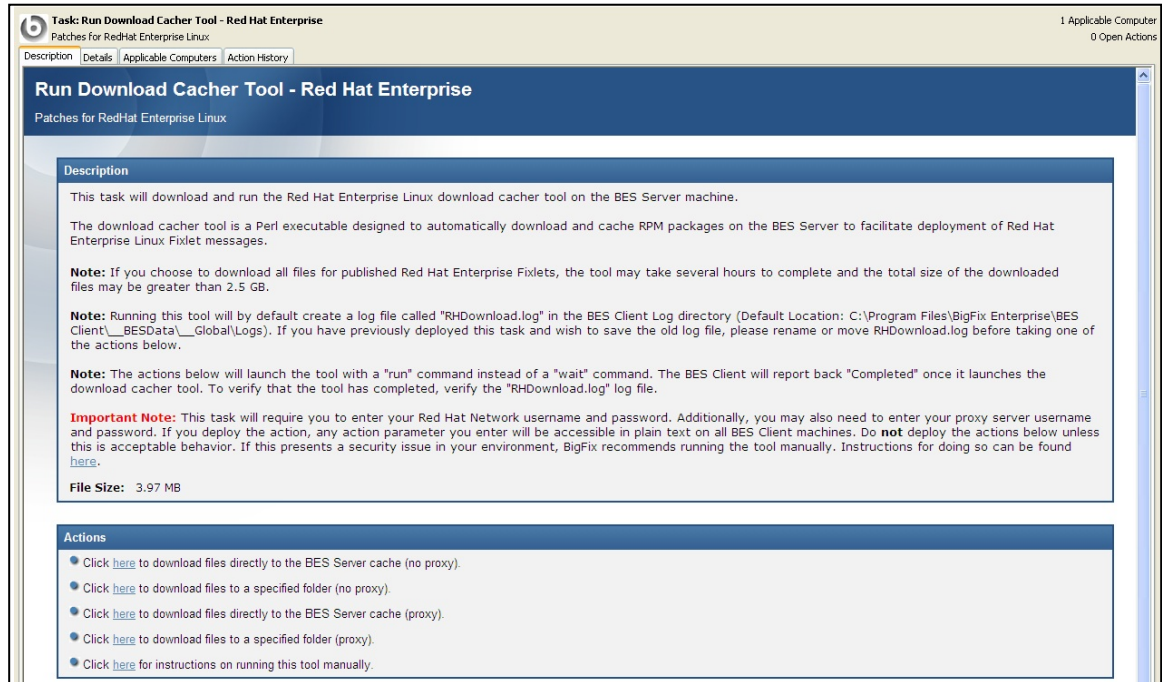
Running the Download Cacher Task

BigFix provides a Task for running the Download Cacher Tool for RedHat Enterprise Linux.

1. From the Tasks tab, choose Run Download Cacher Tool – Red Hat Enterprise.



The Task window opens.



2. Select the appropriate Action link.

Running the Download Cacher Manually

The Download Cacher tool for RedHat Enterprise Linux is a Perl executable. It can be downloaded from the Support website: <http://support.bigfix.com/cgi-bin/kbdirect.pl?id=267>.

To run this tool, create a batch file with the following parameters:

Required Parameters

RHNUsername

Your RedHat Network Username (used to log into <https://rhn.redhat.com>)

RHNPassword

Your RedHat Network Password (used to log into <https://rhn.redhat.com>)

DirectoryPath/cache

The full path to the folder where downloaded files would be saved. The keyword **cache** indicates that files would be downloaded to the BigFix Server cache and should only be used when **downloadRH.exe** is run on a BigFix Server machine.

Architectures

x86 and/or x86_64 defines which architecture of Fixlets to cache. x86 includes all content relating to i386, i586 and i686. x86_64 includes all 64 bit architectures.

Optional Parameters

[Logfile Directory]

Full path to the folder where you would like to create the log file. By default, the log file is placed in the Client Logs directory
(for example: C:\Program Files\BigFix Enterprise\BES Client__BESData__Global\Logs)

[Increase Cache]

This option is only available if the specified Directory Path is the keyword **cache**. Enter **yes** to increase the BigFix Server cache automatically in the event that the size of the files being downloaded exceeds the current amount of free space in the cache. Enter **no** or leave blank to be prompted to manually increase the cache.

[Bulletin Number(s)]

Specify RedHat Errata. Separate each Errata Number with a space (ex: RHSA-2004:609 RHBA-2005:104 RHBA-2005:109). Use this option when you wish to download files for specific errata. If you do not specify this parameter, the tool will cache all files for all published Fixlet messages in the RedHat Enterprise Linux Fixlet site.

[RedHat OS Version(s)]

BigFix currently supports RedHat Enterprise Linux 3.0 and 4.0. Enter a space-delimited list (e.g. "3" or "3 4") to indicate the version(s) for which you would like to download files. If you do not specify this parameter, the tool will cache downloads for all versions.

[PROXY] [Proxy URL] [Proxy Username] [Proxy Password]

PROXY is a keyword used to indicate that downloads must go through a proxy server. If your network requires a proxy server for Internet access, you must specify this keyword and provide required parameters.

Proxy URL is the URL of your proxy server. This is usually the IP address or DNS name of your proxy server, and its port, separated by a colon (ex: http://192.168.100.10:8080).

If your proxy server requires authentication, you must specify your **Proxy Username** and **Proxy Password**. Your Proxy Username is usually in the form of domain\username.

Note: If you run the tool without specifying any parameters, you will be prompted to enter the parameters at the command line.

Dependency Issues

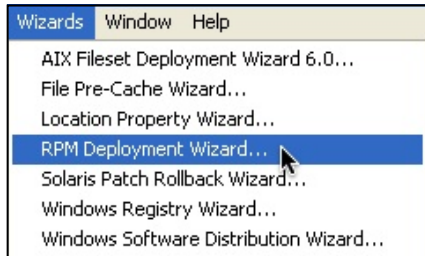
For some updates, audit Fixlet messages with the title "Dependencies Needed" or "Dependency Conflicts" will become relevant. In this case, you will need to solve the dependency issue(s) manually or use the RPM Deployment Wizard before applying remediation Fixlet messages. There are three types of dependency issues:

- **Missing RPM(s):** Users need to install any version of the required package(s), otherwise the update will not install.
- **Required RPM(s) out of date:** Users need to update the RPM(s) to the required version in order to install the update.
- **Conflict between installed RPM(s) and RPM(s) to be installed:** Users need either to remove conflicting RPM(s) or upgrade them to certain versions.

Using the RPM Deployment Wizard

Once you have downloaded an RPM, you can use the Wizard to facilitate deployment.

1. Go to **Wizards > RPM Deployment Wizard**.



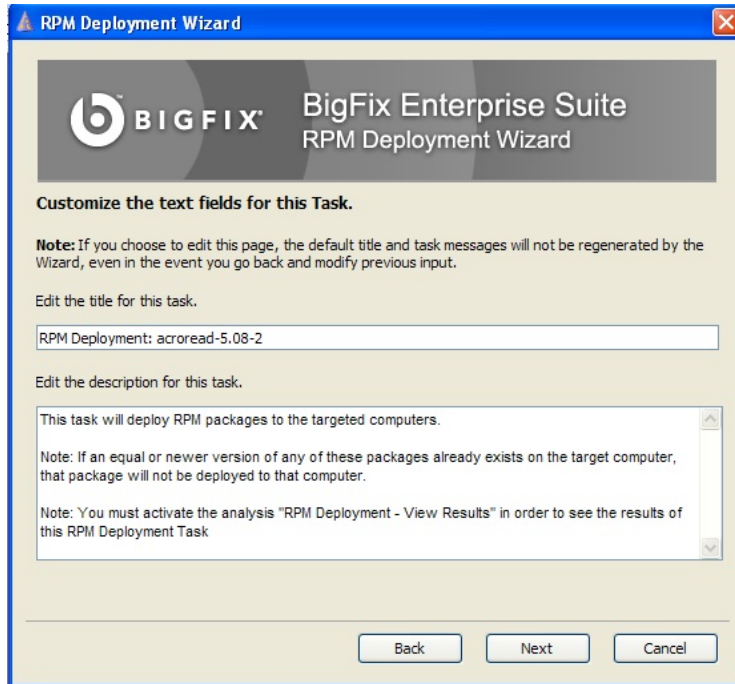
The Wizard opens.

2. Enter the RPM package you wish to deploy.



Click **Next**. Allow ActiveX if asked. The **Customize the text fields for the Task** window opens.

3. Enter a title and description for the Task.



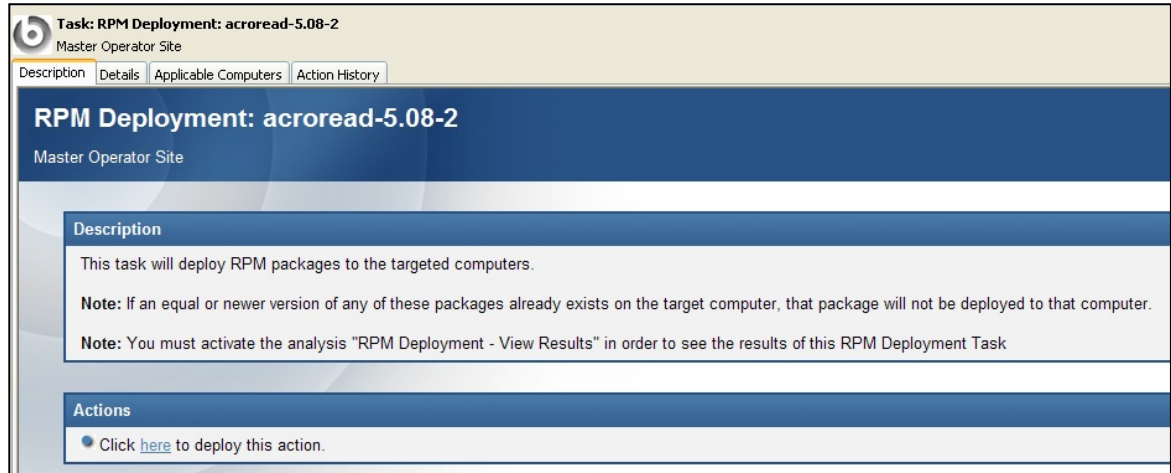
The screenshot shows the 'RPM Deployment Wizard' window with the BigFix logo and title. The main heading is 'Customize the text fields for this Task.' Below this, there is a note: 'Note: If you choose to edit this page, the default title and task messages will not be regenerated by the Wizard, even in the event you go back and modify previous input.' There are two text input fields: one for the title, containing 'RPM Deployment: acroread-5.08-2', and one for the description, containing 'This task will deploy RPM packages to the targeted computers.' Below the description field, there are two more notes: 'Note: If an equal or newer version of any of these packages already exists on the target computer, that package will not be deployed to that computer.' and 'Note: You must activate the analysis "RPM Deployment - View Results" in order to see the results of this RPM Deployment Task'. At the bottom, there are three buttons: 'Back', 'Next', and 'Cancel'.

Click **Next**. The **Confirm Task Creation** window opens.



The screenshot shows the 'RPM Deployment Wizard' window with the BigFix logo and title. The main heading is 'Confirm Task Creation'. Below this, there is a paragraph: 'The RPM Deployment Wizard now has all the information necessary to generate a new RPM deployment task. If necessary, please review the preceding pages using the 'Back' button to ensure all the configuration information is correct. When you are satisfied please click the 'Create' button to create this task in BES or click 'Cancel' to exit this Wizard entirely.' Below this paragraph, there is a note: 'Note: You must activate the analysis "RPM Deployment - View Results" in order to see the results of deploying this task you are now creating.' At the bottom, there is a checkbox labeled 'Show Custom Task Dialog before creating this task.' which is currently unchecked. At the bottom right, there are three buttons: 'Back', 'Create', and 'Cancel'.

4. Check the **Show Custom Task Dialog** box if you choose, and then click **Create**.
The Task opens.



5. Click the **here** link to deploy the Task. Enter your Private Key Password when prompted.

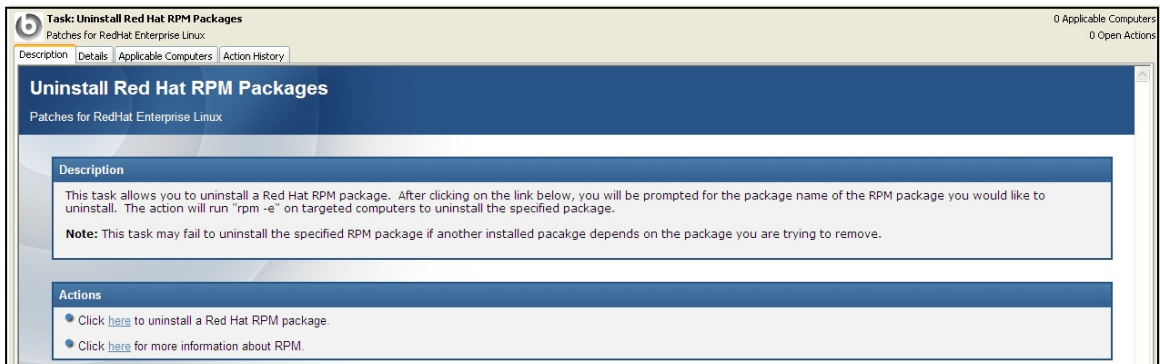
Uninstalling RedHat Linux Patches

BigFix provides a Task to uninstall RedHat RPM packages. This Task is not rollback; it just removes RPMs.

Note: This Task will not uninstall a package if another installed package depends on the package you are trying to remove.

1. From the Tasks tab, choose **Uninstall Red Hat RPM Packages**.

The Task opens.



2. Click the **here** link, and enter the RPM package you wish to uninstall.